

Monthly US Lamb Market Update

Prepared Exclusively for Meat & Livestock Australia - Sydney

December 28, 2023

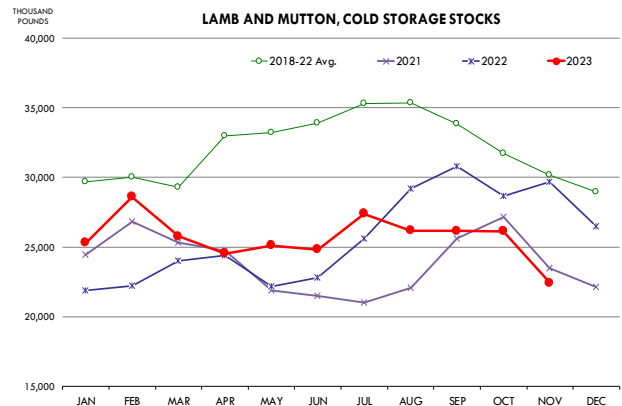
USA Domestic Lamb Market - Supply/Demand Situation

- Lamb production** has steadily improved in the last two months. Lower weights continue to limit overall supply growth, however. November lamb and sheep slaughter was estimated at 189,600 head, 4.7% higher than a year ago and also 1.4% higher than the five year average (see attached table and chart/table on page 9). Slaughter was up by double digits in the two top lamb producing states, while slaughter in Texas declined y/y. Colorado slaughter was 39,100 head, 16% higher than a year ago. With holiday demand around the corner, lamb feedlots kicked into high gear in recent weeks. California lamb and sheep slaughter was 28,400 head, 11% higher than a year ago. Live weights have been well below year ago levels for much of the year and that was the case again in November. Producers have accelerated marketings, resulting in lighter weight lambs coming to market. The average live weight in November was 116 pounds, down 4.1% from a year ago, offsetting much of the overall increase in slaughter.
- Lower cold storage inventories** point to good product movement and higher prices for Easter. The total inventory of lamb and mutton in cold storage at the end of November was estimated at 22.4 million pounds, 24.4% lower than a year ago and 25.7% lower than the five year average. Normally inventories decline into year-end holidays as end users rely on freezer stocks to fill holiday needs. The drawdown in November was 14% (vs. previous month) compared to an average 5% drawdown in the past five years. We saw a similar drawdown in 2021, resulting in tight inventories through much of Q1 in 2022 and high prices during that period.
- Retail feature activity for lamb** usually spikes in December due to holiday celebrations. This year was no different. Retail features counted by USDA in the two weeks ending Dec 15 and Dec 22 were 28% higher than a year ago and 8% higher than the five year average.
- Retail lamb prices** are generally lower than a year ago, with prices coming under significant pressure post Labor Day. The quality and depth of data is important, however. USDA feature counting is good in telling us how much features were there vs. previous year. But it is not great in assessing price levels at retail as a whole. For example, feature data from USDA shows that in the four weeks ending December 22 the average price for lamb racks was about the same as a year ago while the average price of loin chops was 4% higher. However, retail scanner data tells a different story. The average, non-discounted price of lamb rib chops/racks in the last four weeks was \$15.3/lb., 8% lower than a year ago and discounted sales accounted for 15% of total sales. Fresh lamb loin prices for this period at \$8.2 per pound were 21% lower than a year ago. Discounted sales accounted for 57% of all sales vs. a 29% share in 2022 and 13% in 2021.

Top 10 States for Lamb/Sheep Slaughter and Production in November

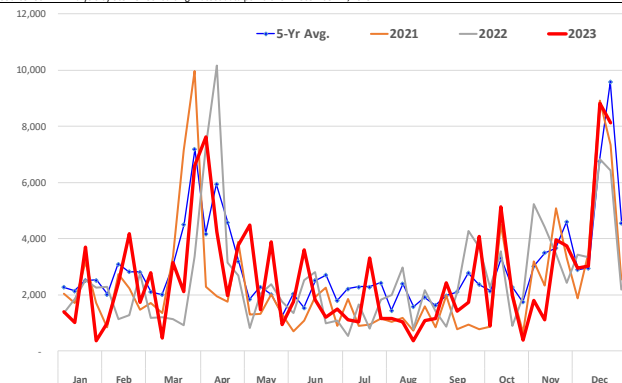
Source: USDA-NASS. Analysis by Steiner Consulting

	Nov-22			Nov-23			Y/Y % Ch. Production
	Sltr. '1000 hd	Live Wt. lb.	Prod. 1000 lb.	Sltr. '1000 hd	Live Wt. lb.	Prod. 1000 lb.	
1 Colorado	33.8	158	5,340	39.1	147	5,756	8%
2 California	25.6	146	3,751	28.4	143	4,056	8%
3 Texas	24.4	105	2,576	22.0	101	2,222	-14%
4 New Jersey	15.8	86	1,366	14.8	81	1,203	-12%
5 Pennsylvania	10.4	103	1,075	12.1	98	1,180	10%
6 Ohio	3.1	162	508	3.9	152	584	15%
7 Indiana	6.4	111	712	6.7	100	666	-6%
8 Oregon	4.6	131	604	4.6	144	655	8%
9 New York	5.8	97	566	6.3	85	535	-5%
10 Illinois	6.3	79	495	6.2	89	554	12%
Other	44.9	110	4,951	45.5	101	4,613	-7%
United States	181.1	121	21,944	189.6	116	22,024	0.4%



NATIONAL RETAIL LAMB FEATURE REPORT: ACTIVITY INDEX

Source: USDA. Analysis by Steiner Consulting. Latest data point is for December 22, 2023



Imported Lamb Supply and Price Trends

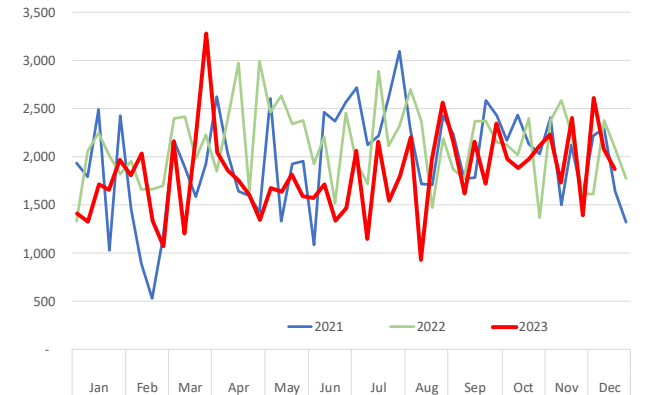
The latest import statistics for lamb, mutton and goat meat are for the month of October and a summary is provided in pages 12-16. Weekly data provided by USDA-AMS offer a more current view of import trends but it should be noted that these are not considered official.

- Lamb imports** during the four weeks ending December 16 were 5,881 MT, 500 MT (-7.8%) lower than a year ago. Lamb imports have been trending higher in the last four weeks but remain below last year’s levels. Australian lamb shipments to the US have been slowly improving and, based on the pace of shipments in November, we think December total will be higher than a year ago. Australian lamb exports to the US in November were a total of 6,167 MT, 16% higher than a year ago. Total Australian lamb shipments in November were 29,869 MT, almost 7k MT (+30%) higher than last year. The increase in shipments to the US was a relatively small contributor to the overall gain, with robust growth in shipments to the Middle East and Iran accounting for the bulk of the increase. In the four weeks ending December 16 US imports from New Zealand were 2,028 MT, 73% higher than a year ago. With more product coming from New Zealand and the strong growth in Australian shipments overall imports in December are likely to register double digit growth.
- Mutton imports** remain well below year ago and 2021 levels. Almost all mutton imports come from Australia and in the last four reported weeks US mutton imports from Australia were 1,273 MT, 47% lower than the same four week period last year. Total mutton imports for this period were 1,466 MT, 41% lower than last year. The decline in US mutton imports is consistent with the slowdown of Australian shipments to this market. In November Australian mutton shipments to the US were 1,244 MT, 50% lower than a year ago. Total Australian shipments for the month were up almost 40%, however, with the bulk of the increase going to China.
- Goat meat imports** have been improving as well, with more Australian product making its way to the US market. In the four weeks ending December 16 US goat meat imports were 1,787 MT, 85% higher than a year ago. Australian goat meat shipments to the US in November were 1,496 MT, 62% higher than a year ago.

Prices for imported lamb are neatly summarized in the price table on page 7. Prices are down for the most part, with retail items seeing the biggest price adjustments. Slowdown in food-service sales has also started to impact high value cuts.

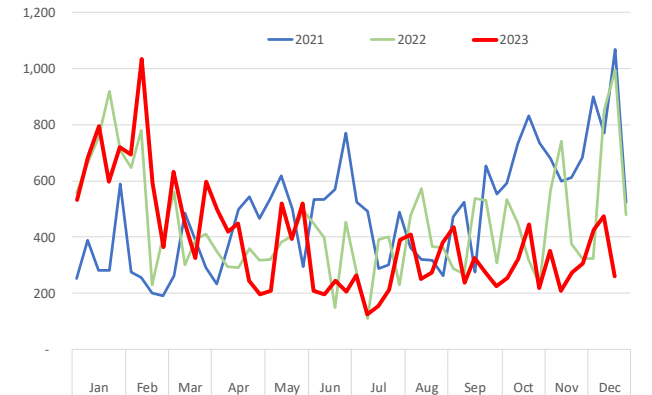
Weekly US Lamb Import. Total Volume. MT Product Wt.

Source: USDA-AMS. Analysis by Steiner Consulting



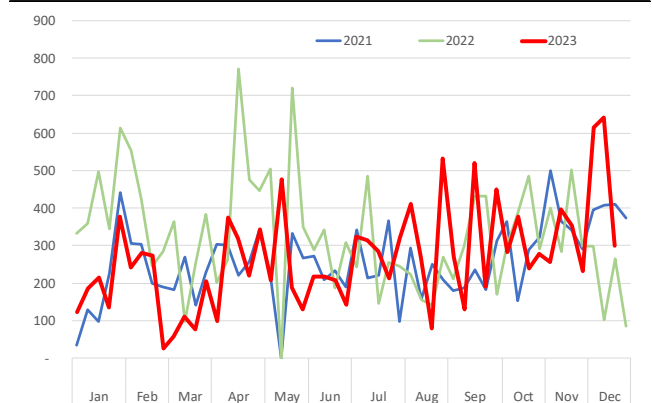
Weekly Mutton Imports. Total Volume. MT Product Wt.

Source: USDA-AMS. Analysis by Steiner Consulting



Weekly Goat Meat Imports. Total Volume. MT Product Wt.

Source: USDA-AMS. Analysis by Steiner Consulting

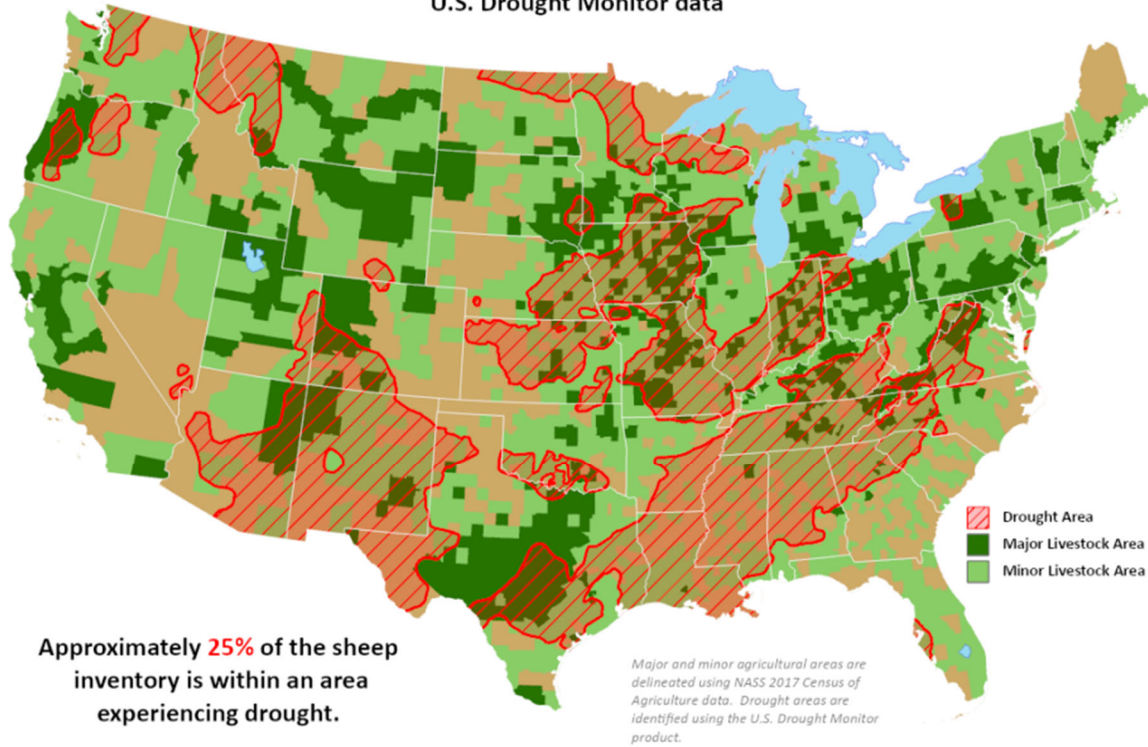




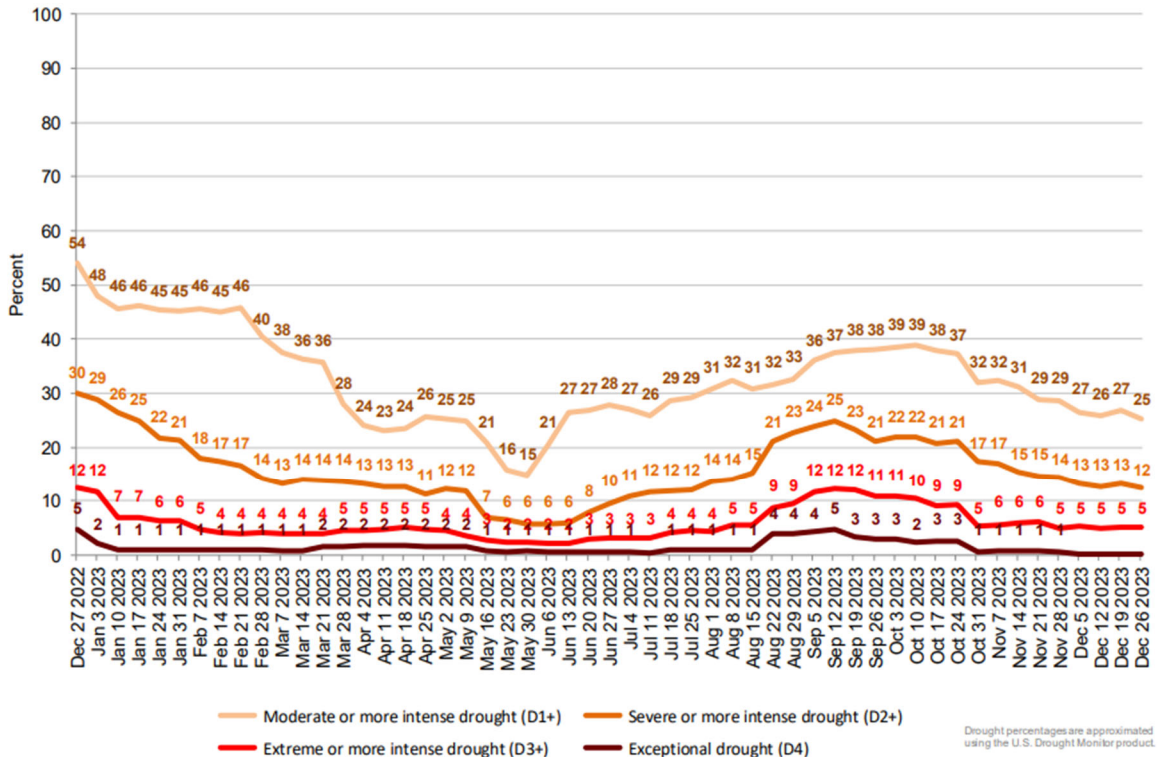
This product was prepared by the
USDA Office of the Chief Economist (OCE)
World Agricultural Outlook Board (WAOB)

Sheep Areas in Drought

Reflects **December 26, 2023**
U.S. Drought Monitor data



Percent of United States Sheep Located in Drought



US Domestic Lamb Cut and Primal Values

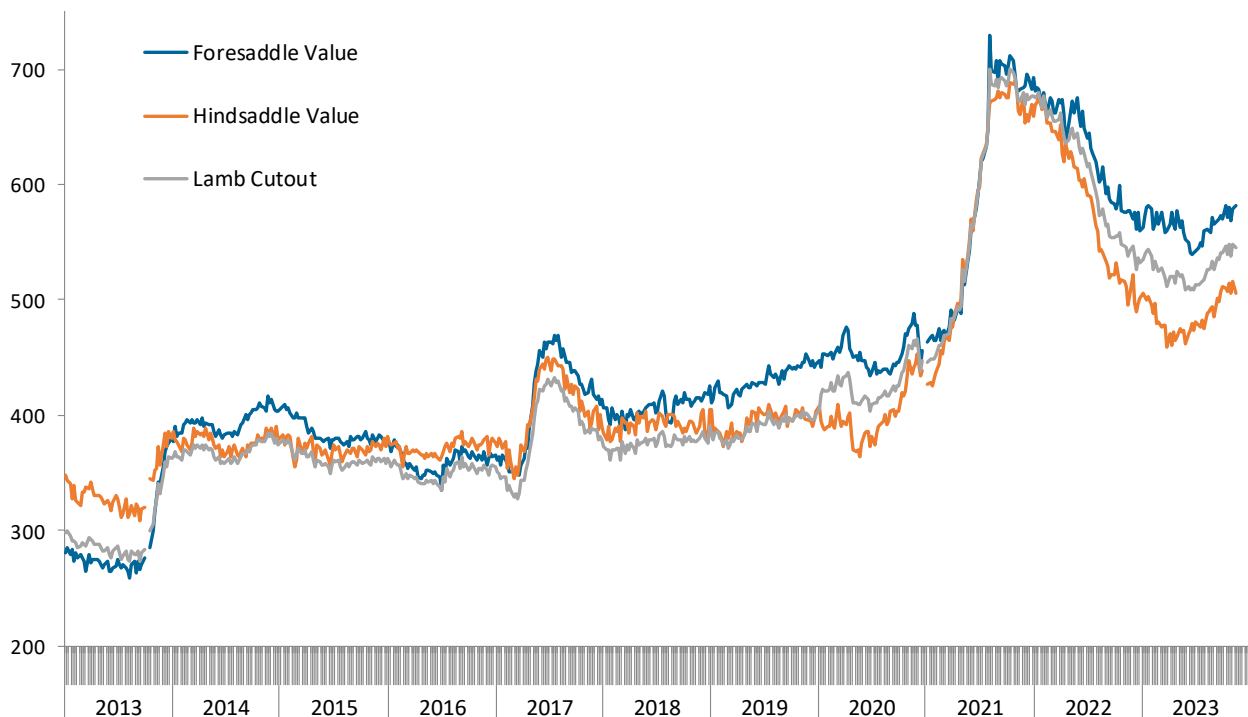
Weekly Prices from USDA. Wt. Average

		12/23/2022	12/15/2023	12/22/2023	w/w	y/y
		US\$/cwt	US\$/cwt	US\$/cwt	% ch.	% ch.
Foresaddle	204 Rack, 8-Rib, Medium	1161.5	1079.8	1074.7	-0.5%	-7.5%
	209 Breast	373.9	491.0	439.8	-10.4%	17.6%
	207 Shoulders, Square Cut	356.8	397.7	394.2	-0.9%	10.5%
	210 Foreshank	628.4	559.0	563.5	0.8%	-10.3%
	Neck **	363.3	416.3	417.9	0.4%	15.0%
Foresaddle Value		575.2	584.1	575.0	-1.6%	0.0%
Hindsaddle	232 Loin, Trimmed, 4x4	735.4	711.9	698.7	-1.9%	-5.0%
	232E Flank, Untrimmed	210.7	244.3	248.2	1.6%	17.8%
	233A Leg, Trotter Off	446.3	487.2	474.2	-2.7%	6.3%
Hindsaddle Value		496.7	506.9	507.0	0.0%	2.1%
Carcass Value		537.1	546.6	542.0	-0.8%	0.9%

** Includes fresh and frozen product. Week to week prices tend to change significantly

Hindsaddle, Foresaddle and Total Lamb Cutout Value

Source: USDA Mandatory Price Reporting System. Analysis by Steiner Consulting (800.526.4612)



Domestic Lamb Cutout Value, USA

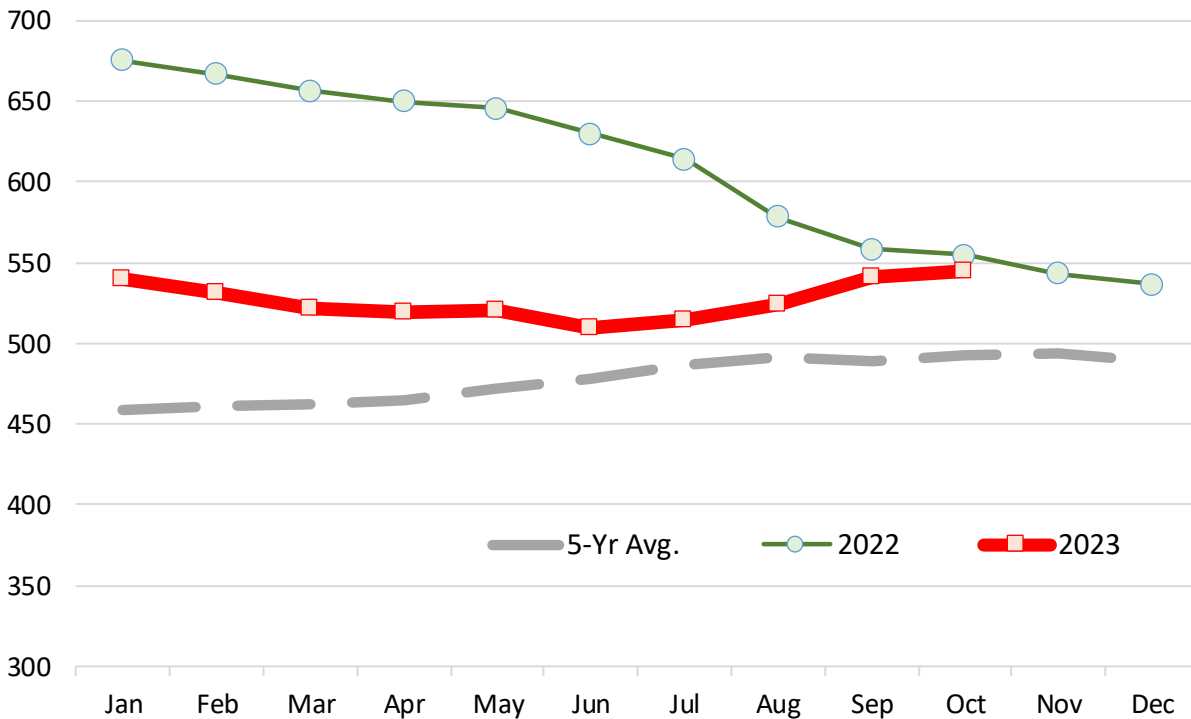
Source: Agricultural Marketin Service, USDA. \$ per 100 lb. Dressed Carcass

	2018	2019	2020	2021	2022	2023	5-Yr Avg.	% ch. vs. Yr Ago	% ch. vs. 5-Yr Avg.
Jan	368.85	383.43	417.78	447.93	674.75	539.93	458.55	-20.0%	17.7%
Feb	370.47	386.61	423.08	459.01	666.76	531.52	461.19	-20.3%	15.3%
Mar	369.88	382.21	429.97	472.79	656.04	521.34	462.18	-20.5%	12.8%
Apr	373.25	380.42	430.76	489.76	649.56	519.01	464.75	-20.1%	11.7%
May	377.43	389.48	417.20	531.44	645.15	520.94	472.14	-19.3%	10.3%
Jun	382.01	391.81	412.29	575.84	629.63	509.46	478.32	-19.1%	6.5%
Jul	381.66	397.03	412.33	625.93	613.89	513.85	486.17	-16.3%	5.7%
Aug	375.87	393.39	417.76	691.20	578.40	524.36	491.32	-9.3%	6.7%
Sep	378.23	396.62	423.22	689.51	558.19	540.84	489.15	-3.1%	10.6%
Oct	379.26	398.15	439.53	693.44	554.46	544.25	492.97	-1.8%	10.4%
Nov	379.39	407.49	461.31	676.35	542.81	542.78	493.47	0.0%	10.0%
Dec	383.36	397.78	450.78	674.88	536.20	548.62	488.60	2.3%	12.3%

Note: Monthly Cutout Value Calculated Using Weekly Data

USA Domestic Lamb Cutout Value

Monthly Avg. Price; Source: USDA



Slaughter Lamb Price, Sioux Falls, SD Basis

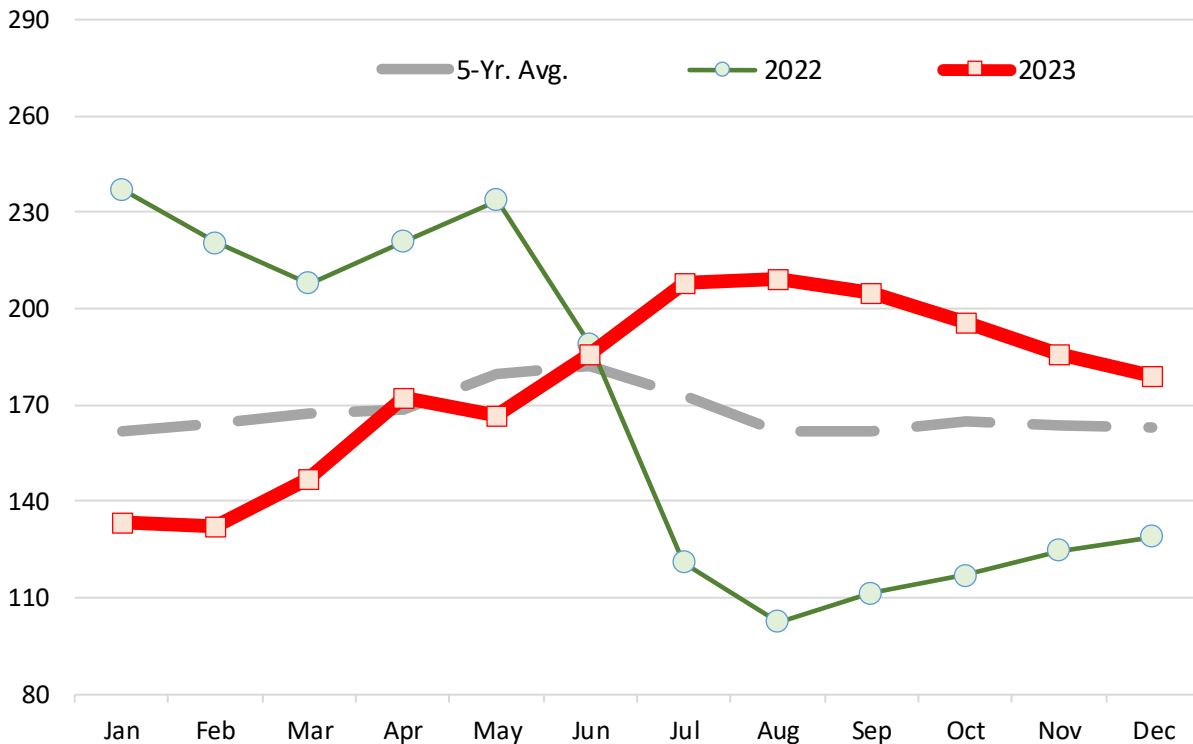
Monthly Average Prices, 100-150 lb. Woolled and Shorn, Choice & Prime 2-3 . \$ per 100 lb.

	2018	2019	2020	2021	2022	2023	5-Yr. Avg.	% ch. vs. Yr Ago.	% ch. vs. 5-Yr Avg.
Jan	142.1	135.8	157.2	164.9	237.0	133.5	161.7	-43.7%	-17.5%
Feb	154.1	142.6	170.6	167.4	220.6	132.2	164.6	-40.1%	-19.7%
Mar	153.6	150.4	161.9	184.0	207.9	147.3	167.5	-29.2%	-12.1%
Apr	156.0	162.2	107.8	192.0	220.8	172.2	168.5	-22.0%	2.2%
May	161.6	165.4	127.5	223.3	233.8	166.7	179.7	-28.7%	-7.2%
Jun	166.6	157.4	133.0	261.5	189.0	185.7	182.2	-1.7%	1.9%
Jul	146.3	152.0	134.7	277.2	121.1	208.3	173.3	72.0%	20.2%
Aug	132.4	151.5	119.8	254.2	102.7	209.1	161.6	103.7%	29.4%
Sep	129.3	147.9	133.3	242.9	111.6	205.0	161.7	83.8%	26.8%
Oct	130.4	148.4	165.3	231.6	116.9	195.8	164.7	67.5%	18.9%
Nov	129.1	150.3	165.7	227.1	124.7	185.9	163.8	49.1%	13.5%
Dec	133.0	151.7	156.5	228.0	129.1	179.3	162.9	38.9%	10.1%

Source: USDA

Slaughter Lamb Price, Sioux Falls, SD Basis

Monthly Average Prices, 100-150 lb. Woolled and Shorn, Choice & Prime 2-3 . \$ per 100 lb.



Imported Lamb Price Summary

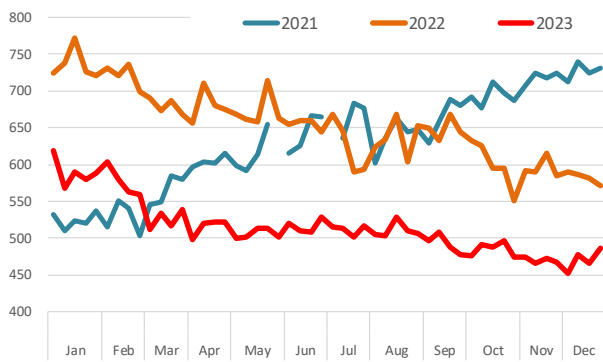
Source: USDA Agricultural Marketing Service, Mandatory Price Reporting

	2022 Volume	2022 Wt. Avg. \$	2022 Implied Value	Dec 26, 2022	Dec 18, 2023	Dec 25, 2023	% ch. vs. wk Ago	% ch. vs. Year Ago
Fresh/Chilled								
	Pounds	\$/lb.	Total \$					
AUS Shortloin, 1-Rib, 0x0	11,999,897	\$ 6.53	\$ 78,380,080	\$ 5.72	\$ 4.66	\$ 4.86	4.3%	-15.0%
AUS Leg, bnls	7,342,625	\$ 6.06	\$ 44,494,048	\$ 4.97	\$ 4.38	\$ 4.32	-1.3%	-13.0%
AUS Shoulder, Square-cut	6,261,317	\$ 4.06	\$ 25,432,991	\$ 3.70	\$ 3.24	\$ 3.13	-3.4%	-15.4%
AUS Rack, FR, Cap-off, 28 oz/up	3,564,633	\$ 13.68	\$ 48,767,189	\$ 13.01	\$ 11.30	\$ 11.41	1.0%	-12.3%
AUS Shortloin, 1-Rib, 1x1	1,300,362	\$ 6.27	\$ 8,151,045		\$ 3.98	\$ 3.99	0.2%	
AUS Rack, FR, Cap-off, 20-24 oz	1,099,597	\$ 13.74	\$ 15,110,309		\$ 12.16	\$ 12.57	3.4%	
AUS Rack, FR, Cap-off, 24-28 oz	573,922	\$ 14.34	\$ 8,230,612	\$ 13.60	\$ 12.02	\$ 12.88	7.1%	-5.3%
AUS Leg, semi bnls	1,445,545	\$ 5.24	\$ 7,581,438	\$ 4.84	\$ 3.51	\$ 3.87	10.2%	-20.1%
AUS Foreshank, VP	595,195	\$ 4.30	\$ 2,560,380	\$ 4.05	\$ 3.62	\$ 3.92	8.1%	-3.3%
AUS Leg, Long	614,136	\$ 5.77	\$ 3,544,520		\$ 3.64	\$ 3.36	-7.5%	
AUS Tenderloin	7,802	\$ 13.68	\$ 106,746		\$ 12.66	\$ 12.61	-0.3%	
AUS Shoulder, Square-cut, bnls	0	\$ -	\$ -				n/a	
Subtotal	34,797,229	\$ 6.79	\$ 236,147,712	\$ 5.44	\$ 5.15	\$ 5.24	1.8%	-3.8%
Frozen								
AUS Foreshank, LP	4,351,830	\$ 3.89	\$ 16,945,481	\$ 3.57	\$ 2.77	\$ 2.81	1.5%	-21.2%
AUS Leg, Long	4,030,251	\$ 5.08	\$ 20,457,871	\$ 3.10	\$ 2.58	\$ 2.50	-3.3%	-19.5%
NZ Rack, FR, Cap-off, 16-20 oz	3,902,751	\$ 13.26	\$ 51,745,077	\$ 13.24	\$ 12.76	\$ 12.76	0.0%	-3.6%
AUS Leg, bnls	3,859,167	\$ 4.98	\$ 19,200,103	\$ 3.87	\$ 2.87	\$ 3.37	17.6%	-12.7%
AUS Hindshank, LP	2,128,233	\$ 3.87	\$ 8,241,587		\$ 2.56	\$ 2.66	4.0%	
NZ Rack, FR, Cap-off, 12-16 oz	1,950,321	\$ 13.22	\$ 25,789,497	\$ 13.13	\$ 12.92	\$ 12.97	0.4%	-1.2%
NZ Rack, FR, Cap-off, 20 oz/up	1,798,990	\$ 12.96	\$ 23,323,834	\$ 12.32	\$ 12.59	\$ 12.76	1.3%	3.5%
AUS Leg, bnls, shank-off	1,682,255	\$ 4.97	\$ 8,360,931		\$ 2.90	\$ 2.94	1.2%	
AUS Shoulder, Square-cut	1,417,743	\$ 3.81	\$ 5,395,106	\$ 2.69	\$ 1.99	\$ 2.22	12.0%	-17.5%
AUS Shoulder, Square-cut, bnls	672,346	\$ 5.46	\$ 3,674,183	\$ 5.11	\$ 2.91	\$ 4.68	60.6%	-8.5%
AUS Rack, FR, Cap-off, 28 oz/up	514,017	\$ 14.06	\$ 7,228,532	\$ 13.33	\$ 12.95	\$ 12.72	-1.8%	-4.6%
AUS Rack, FR, Cap-off, 24-28 oz	466,927	\$ 13.92	\$ 6,498,102	\$ 12.26	\$ 11.32	\$ 12.44	10.0%	1.5%
AUS Rack, FR, Cap-off, 20-24 oz	370,910	\$ 13.52	\$ 5,014,501	\$ 13.02	\$ 12.22	\$ 10.48	-14.2%	-19.5%
AUS Tenderloin	83,667	\$ 10.64	\$ 890,438			\$ 9.42	n/a	
AUS Hindshank, VP	58,269	\$ 4.64	\$ 270,159	\$ 4.56		\$ 4.10	n/a	-10.0%
NZ Rack, FR, Cap-off, 12 oz/dn	49,714	\$ 12.75	\$ 633,964				n/a	
AUS Rack, FR, Cap-off, 20 oz/dn	43,182	\$ 13.00	\$ 561,437		\$ 11.88	\$ 12.91	8.7%	
Subtotal	27,380,573	\$ 7.46	\$ 204,230,803	\$ 6.11	\$ 5.97	\$ 6.14	2.9%	0.5%

Please note that the prices, volume and sales value reported above represents only subset of total US lamb imports. It only reflects the data reported through the Mandatory Price Reporting System. It is only for negotiated sales, no formula sales. Trade from smaller importers and traders is not included in the summary above. Data that does not meet the confidentiality guidelines also is not included in the above table.

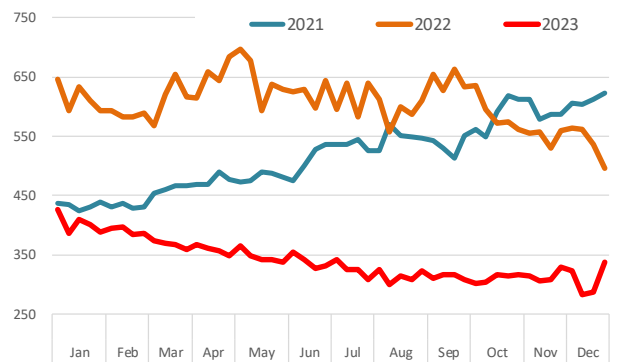
Shortloin, 1-Rib, 0x0, Australian, Chilled

Source: USDA-AMS. Weighted Average Weekly Price in US\$/cwt.



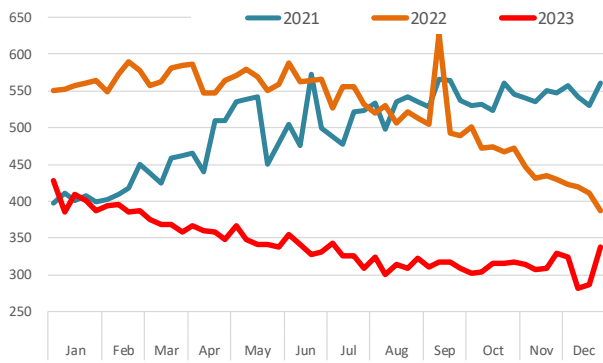
Leg, bnls, Australian, Chilled

Source: USDA-AMS. Weighted Average Weekly Price in US\$/cwt.



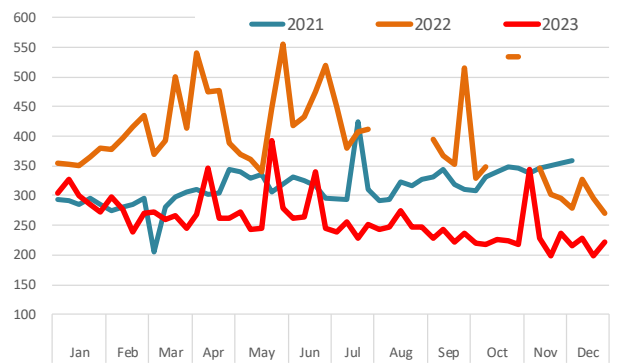
Leg, bnls, Australian, Frozen

Source: USDA-AMS. Weighted Average Weekly Price in US\$/cwt.



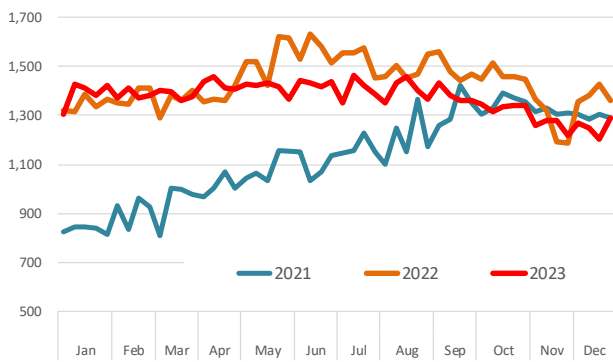
Shoulder Cut, Australia, Frozen

Source: USDA-AMS. Weighted Average Weekly Price in US\$/cwt.



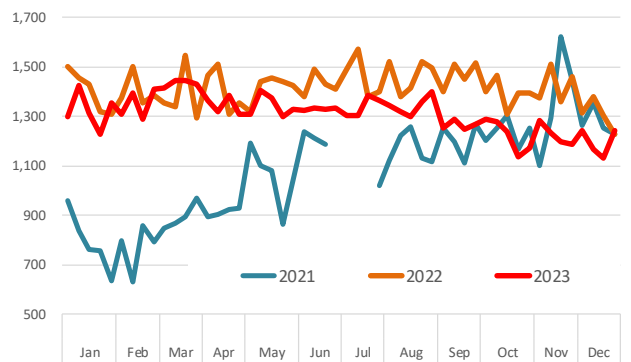
Racks, Cap-off, 24-28oz, Australian, Chilled

Source: USDA-AMS. Weighted Average Weekly Price in US\$/cwt.



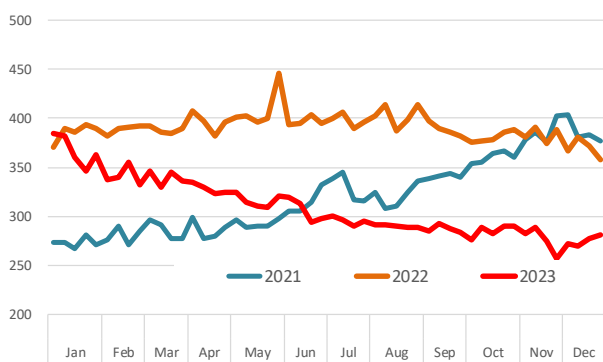
Racks, Cap-off, 24-28oz, Australian, Frozen

Source: USDA-AMS. Weighted Average Weekly Price in US\$/cwt.



AUS Foreshank, LP

Source: USDA-AMS. Weighted Average Weekly Price in US\$/cwt.



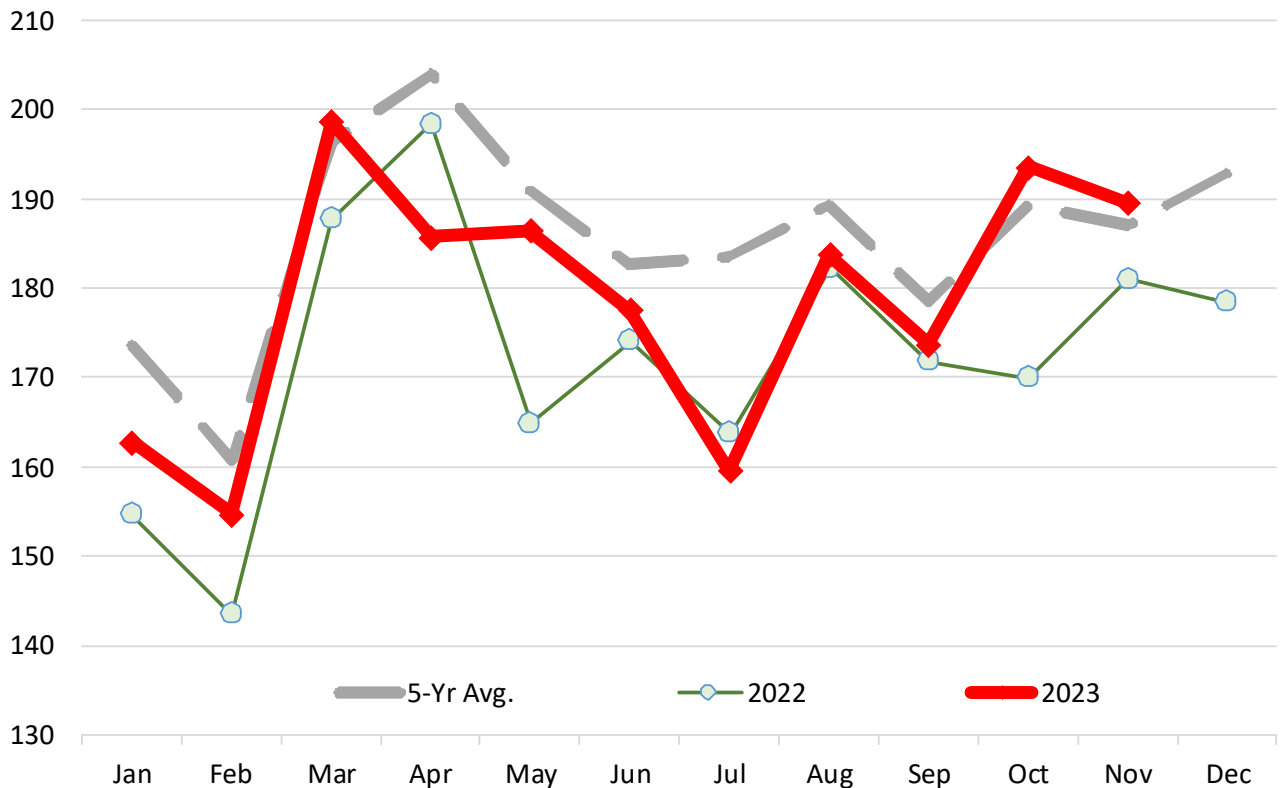
Lamb & Sheep Slaughter. Monthly. '000 Head

	2018	2019	2020	2021	2022	2023	5-Yr Avg.	% ch Yr Ago	% ch 5-Yr Avg.
Jan	180.6	187.2	183.3	162.4	154.8	162.8	173.7	5.2%	-6.3%
Feb	164.3	168.7	163.8	163.9	143.6	154.8	160.9	7.8%	-3.8%
Mar	201.5	190.4	187.7	214.7	187.8	198.7	196.4	5.8%	1.2%
Apr	181.5	235.7	181.2	223.5	198.5	185.8	204.1	-6.4%	-9.0%
May	201.8	210.0	195.4	182.4	165.0	186.5	190.9	13.0%	-2.3%
Jun	180.6	175.4	193.2	189.8	174.2	177.6	182.6	2.0%	-2.8%
Jul	180.0	188.6	196.2	189.3	163.8	159.6	183.6	-2.6%	-13.1%
Aug	205.4	202.9	178.0	178.4	182.4	183.8	189.4	0.8%	-3.0%
Sep	172.2	179.3	185.0	184.4	171.9	173.8	178.6	1.1%	-2.7%
Oct	199.9	206.0	182.5	188.5	170.0	193.6	189.4	13.9%	2.2%
Nov	195.3	181.0	181.3	196.6	181.1	189.6	187.1	4.7%	1.4%
Dec	201.8	196.5	197.8	189.5	178.5		192.8		

Source: USDA

Lamb & Sheep Slaughter. Monthly. '000 Head

Monthly Data. Source: USDA



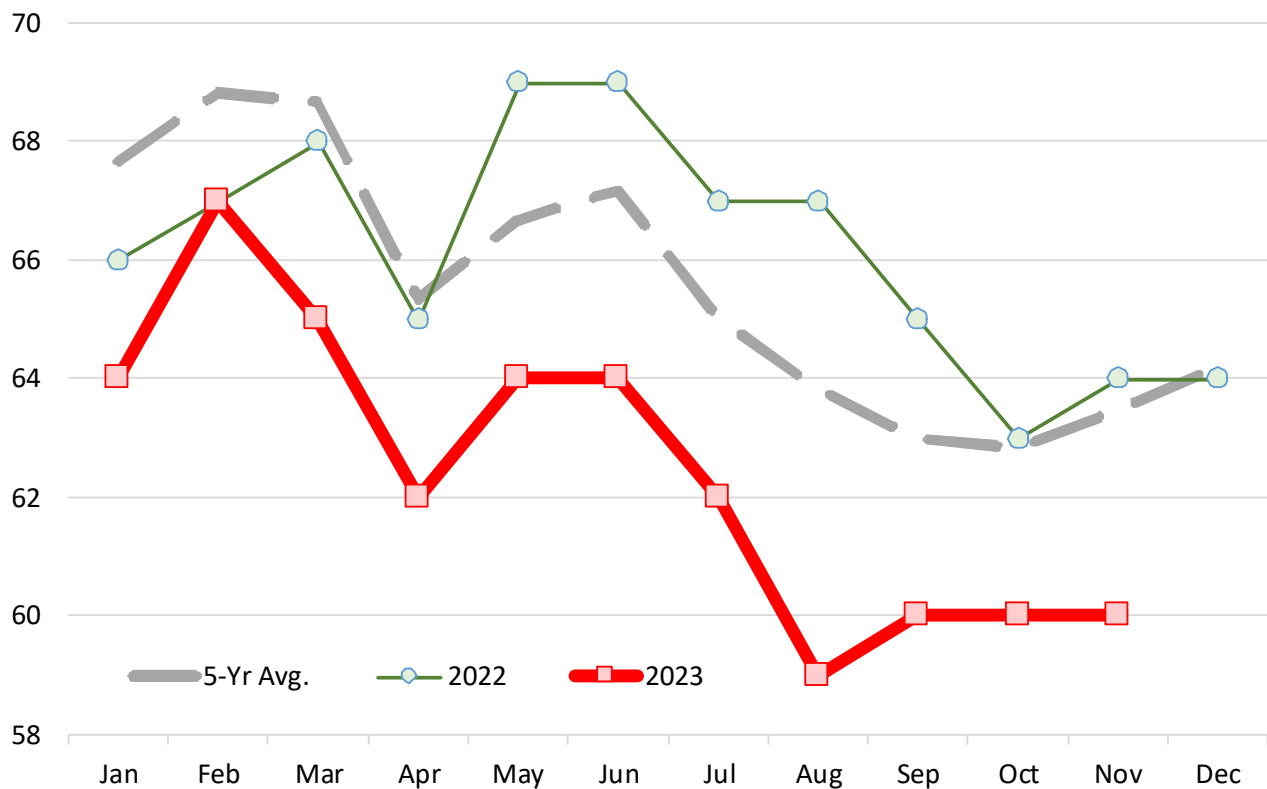
Lamb and Yearling Dressed Weights. Monthly. Avg. Pounds per Carcass

	2018	2019	2020	2021	2022	2023	5-Yr Avg.	% ch Yr Ago	% ch 5-Yr Avg.
Jan	73.00	69.00	67.00	67.00	66.00	64.00	67.67	-3.0%	-5.4%
Feb	74.00	69.00	68.00	68.00	67.00	67.00	68.83	0.0%	-2.7%
Mar	72.00	71.00	68.00	68.00	68.00	65.00	68.67	-4.4%	-5.3%
Apr	71.00	67.00	64.00	63.00	65.00	62.00	65.33	-4.6%	-5.1%
May	70.00	66.00	68.00	63.00	69.00	64.00	66.67	-7.2%	-4.0%
Jun	71.00	68.00	68.00	63.00	69.00	64.00	67.17	-7.2%	-4.7%
Jul	70.00	66.00	65.00	60.00	67.00	62.00	65.00	-7.5%	-4.6%
Aug	68.00	65.00	64.00	60.00	67.00	59.00	63.83	-11.9%	-7.6%
Sep	69.00	63.00	61.00	60.00	65.00	60.00	63.00	-7.7%	-4.8%
Oct	67.00	64.00	61.00	62.00	63.00	60.00	62.83	-4.8%	-4.5%
Nov	68.00	64.00	61.00	64.00	64.00	60.00	63.50	-6.3%	-5.5%
Dec	67.00	63.00	63.00	64.00	64.00		64.20		

Source: USDA

Lamb and Yearling Dressed Weights. Monthly. Avg. Pounds per Carcass

Monthly Data. Source: USDA



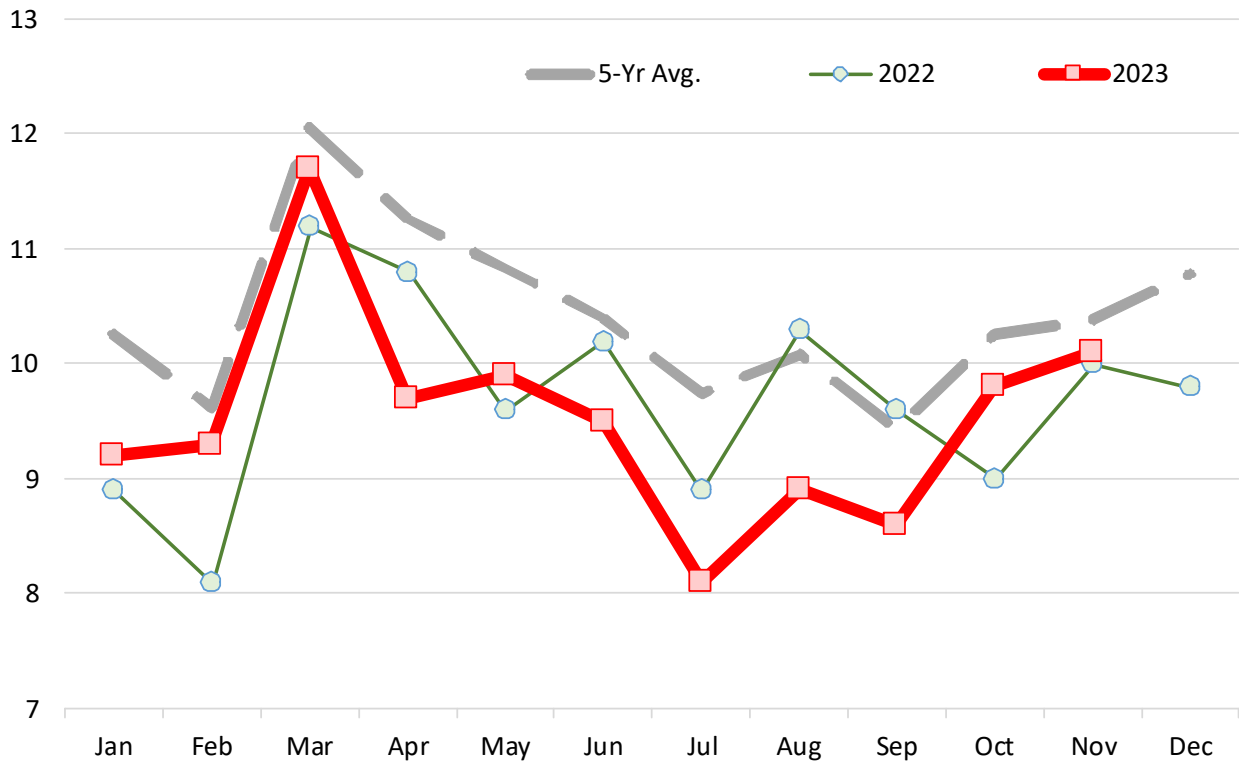
Lamb Yearling Production. Monthly. Carcass Wt. Basis. Million Lb.

	2018	2019	2020	2021	2022	2023	5-Yr Avg.	% ch Yr Ago	% ch 5-Yr Avg.
Jan	11.7	11.4	10.9	9.4	8.9	9.2	10.2	3.4%	-10.2%
Feb	10.8	10.1	9.7	9.7	8.1	9.3	9.6	14.8%	-3.3%
Mar	13.3	12.1	11.3	12.7	11.2	11.7	12.0	4.5%	-2.9%
Apr	11.5	13.7	9.9	12.0	10.8	9.7	11.3	-10.2%	-13.9%
May	12.5	12.1	11.3	9.6	9.6	9.9	10.8	3.1%	-8.6%
Jun	11.2	10.3	11.3	9.9	10.2	9.5	10.4	-6.9%	-8.7%
Jul	11.0	10.7	10.6	9.2	8.9	8.1	9.8	-9.0%	-16.9%
Aug	11.9	11.1	9.5	8.8	10.3	8.9	10.1	-13.6%	-11.7%
Sep	10.1	9.7	9.4	9.2	9.6	8.6	9.4	-10.4%	-8.8%
Oct	11.9	11.5	9.2	10.1	9.0	9.8	10.3	8.9%	-4.4%
Nov	11.8	10.2	9.3	10.9	10.0	10.1	10.4	1.0%	-2.7%
Dec	11.9	11.0	10.7	10.5	9.8		10.8		

Source: USDA

Lamb Yearling Production. Monthly. Carcass Wt. Basis. Million Lb.

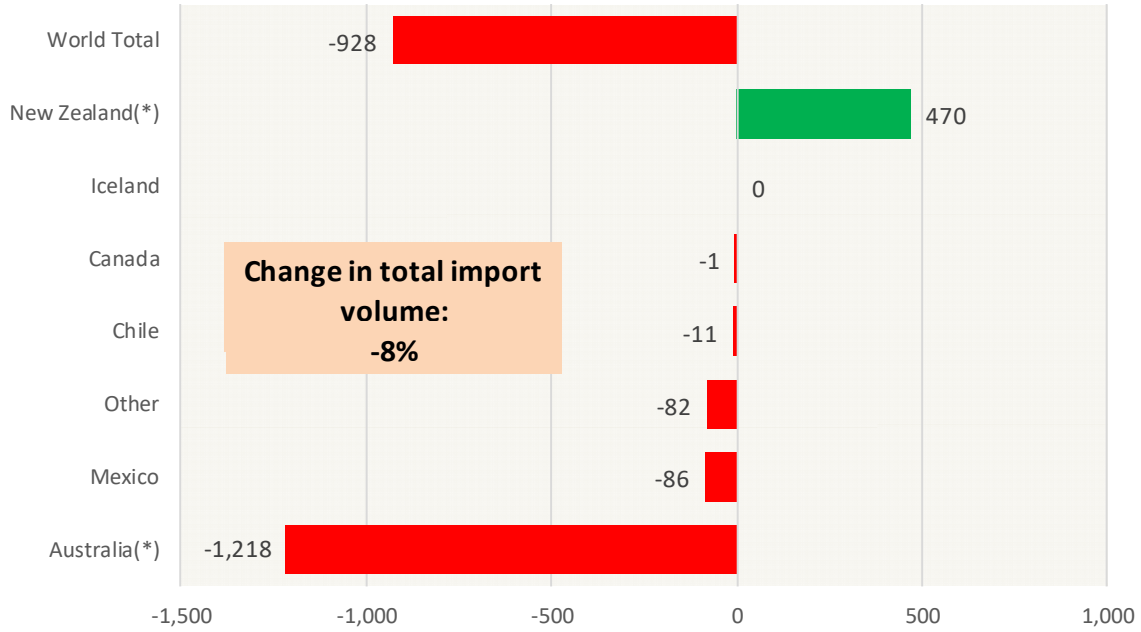
Monthly Data. Source: USDA



Y/Y Ch. in Oct. 23 vs. Oct. 22 US Mutton, Goat, Lamb Imports

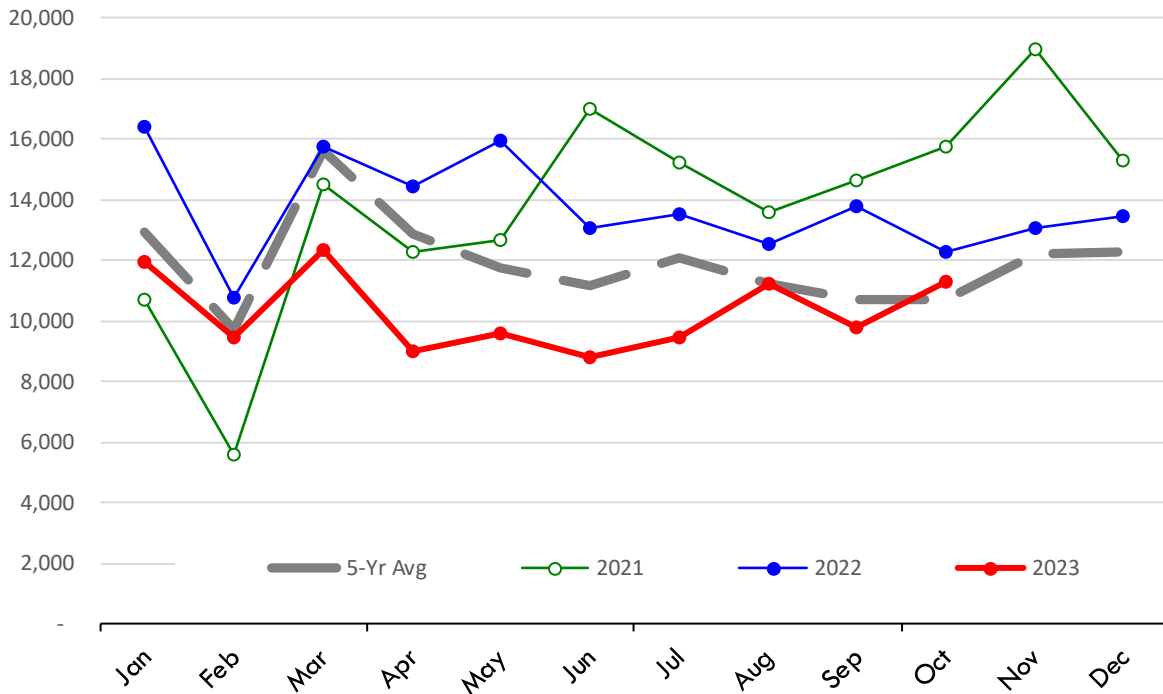
Source: USDA/FAS

Units: Metric Tons



Quantity of US Imports of Fr/Frz Mutton, Goat, Lamb: World Total

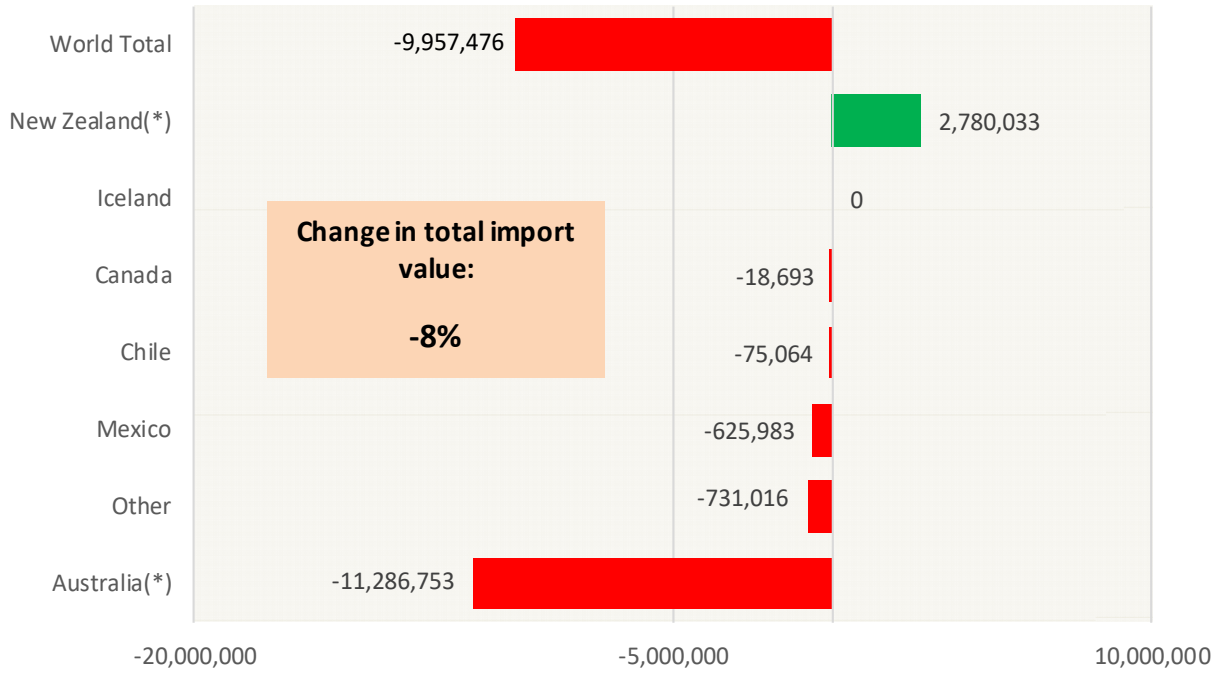
Source: USDA/FAS. Units: Metric Ton. Analysis by: Steiner Consulting (800.526.4612)



Y/Y Ch. in Oct. 23 vs. Oct 22 US Mutton, Goat, Lamb Import Value (\$)

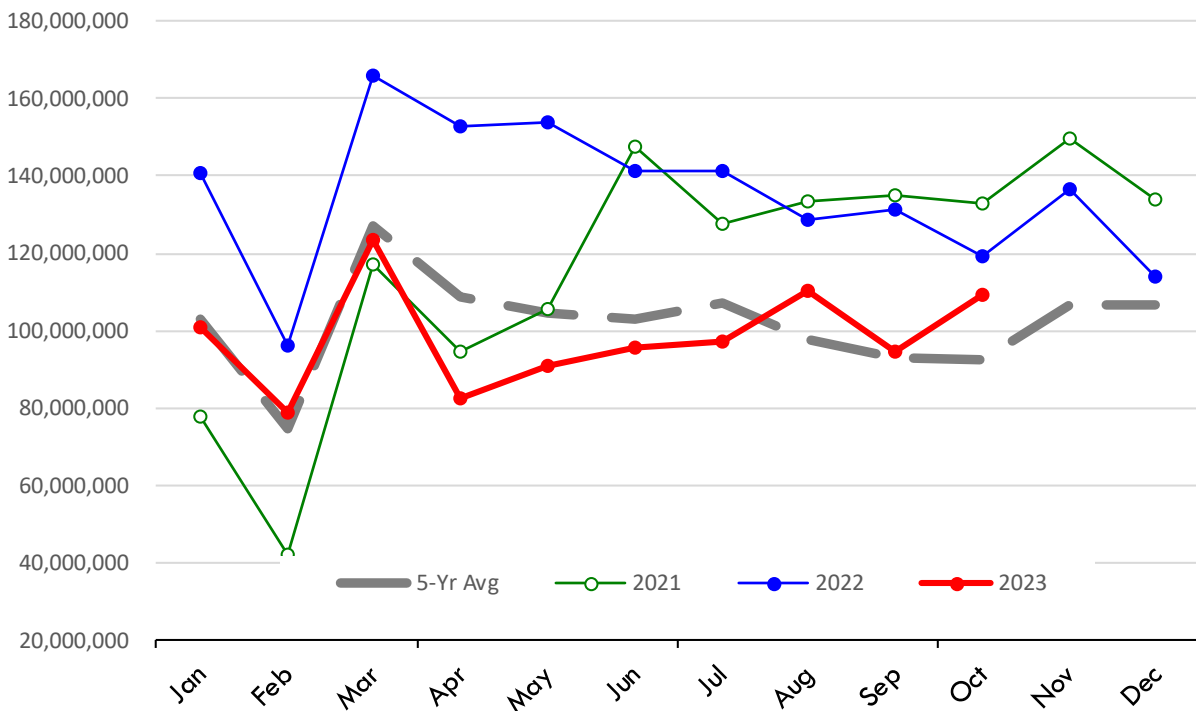
Source: USDA/FAS

Units: US Dollars



\$ Value of US Imports of Fr/Frz Mutton, Goat, Lamb: World Total

Source: USDA/FAS. Units: US Dollars. Analysis by: Steiner Consulting (800.526.4612)

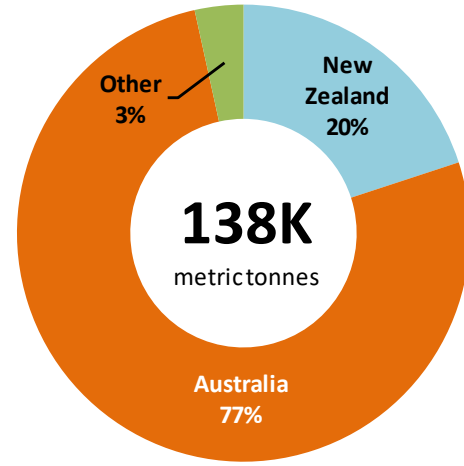
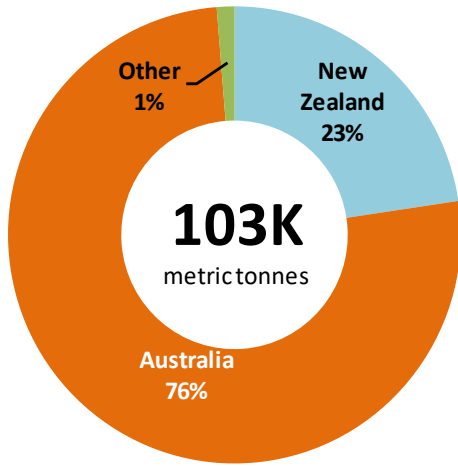


TOP US LAMB IMPORT MARKETS IN 2023

TOP US LAMB IMPORT MARKETS IN 2022

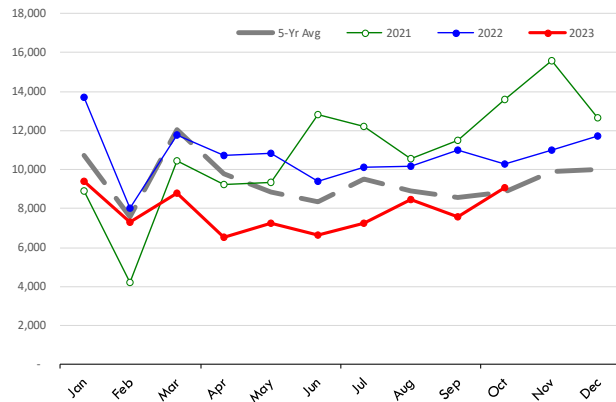
Total Volume and Country Shares for Period Jan - Oct 2023, MT

Total Volume and Country Shares for Period Jan - Oct 2022, MT



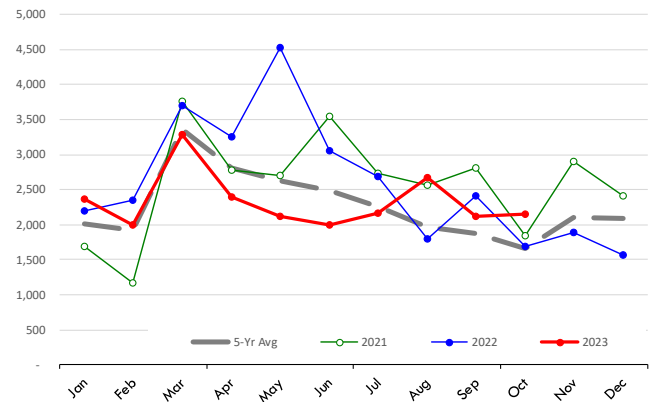
Quantity of US Imports of Fr/Frz Mutton, Goat, Lamb: Australia(*)

Source: USDA/FAS. Units: Metric Ton. Analysis by: Steiner Consulting (800.526.4612)



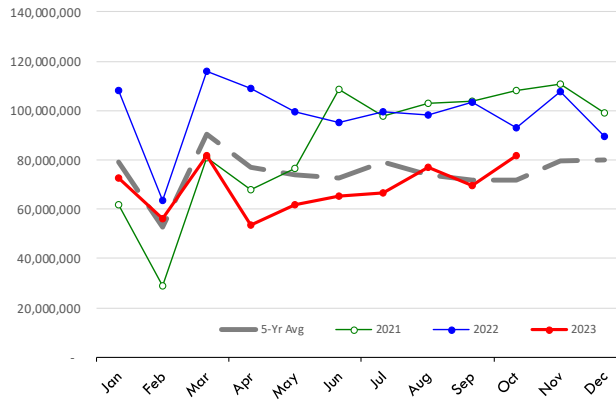
Quantity of US Imports of Fr/Frz Mutton, Goat, Lamb: New Zealand(*)

Source: USDA/FAS. Units: Metric Ton. Analysis by: Steiner Consulting (800.526.4612)



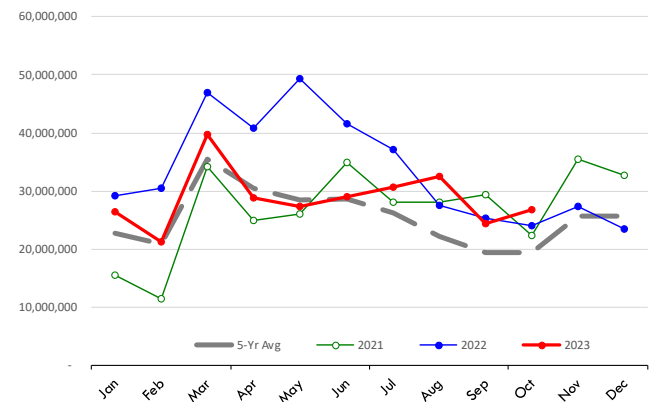
\$ Value of US Imports of Fr/Frz Mutton, Goat, Lamb: Australia(*)

Source: USDA/FAS. Units: US Dollars. Analysis by: Steiner Consulting (800.526.4612)



\$ Value of US Imports of Fr/Frz Mutton, Goat, Lamb: New Zealand(*)

Source: USDA/FAS. Units: US Dollars. Analysis by: Steiner Consulting (800.526.4612)



Lamb Trade Data Detail

Data source: USDA-FAS. Analysis by Steiner Consulting

Summary of US Lamb Imports by Country. Kilogram (shipped wt.) and USD

Data source: USDA-FAS and Census. Analysis by Steiner Consulting

	Oct-22			Oct-23			Jan - October 2022			Jan - October 2023		
	\$US	Kg	\$/kg.	\$US	Kg	\$/kg.	\$US	Kg	\$/kg.	\$US	Kg	\$/kg.
0204222090 Various Lamb Cuts, bone-in, fresh or chilled												
Australia	26,727,638	1,539,200	17.36	30,244,228	1,952,700	15.49	291,150,000	17,229,200	16.90	210,636,000	11,180,900	18.84
New Zealand	4,261,652	235,200	18.12	4,334,193	199,800	21.69	65,203,000	3,331,400	19.57	44,338,000	1,984,700	22.34
Other Countries	216,940	16,300	13.31	33,535	1,400	23.95	1,807,000	118,200	15.29	832,000	42,300	19.67
World Total	31,206,230	1,790,700	17.43	34,611,956	2,153,900	16.07	358,160,000	20,678,800	17.32	255,806,000	13,207,900	19.37
0204422090 Various Lamb Cuts, bone-in, frozen												
Australia	12,837,484	1,264,300	10.15	12,901,625	861,500	14.98	123,138,000	11,782,400	10.45	94,397,000	7,836,600	12.05
New Zealand	12,182,037	607,200	20.06	13,290,080	617,700	21.52	164,066,000	9,002,600	18.22	146,785,000	7,258,300	20.22
Other Countries	74,626	12,100	6.17	-	-	-	4,125,000	381,500	10.81	1,518,000	83,800	18.11
World Total	25,094,147	1,883,600	13.32	26,191,705	1,479,200	17.71	291,329,000	21,166,500	13.76	242,700,000	15,178,700	15.99
0204432000 Various Lamb Cuts, boneless, frozen												
Australia	19,194,975	1,965,300	9.77	9,799,888	1,615,100	6.07	158,598,000	15,010,100	10.57	84,488,000	12,070,000	7.00
New Zealand	1,926,655	185,100	10.41	1,121,249	141,000	7.95	19,304,000	2,017,500	9.57	17,156,000	1,868,000	9.18
Other Countries	261,157	24,000	10.88	-	-	-	344,000	32,900	10.46	494,000	56,800	8.70
World Total	21,382,787	2,174,400	9.83	10,921,137	1,756,100	6.22	178,246,000	17,060,500	10.45	102,138,000	13,994,800	7.30
0204232000 Various Lamb Cuts, bone-in, fresh or chilled												
Australia	9,267,651	831,900	11.14	9,255,585	1,176,600	7.87	106,650,000	8,963,400	11.90	81,017,000	9,157,900	8.85
New Zealand	1,711,207	142,400	12.02	1,675,710	160,800	10.42	25,254,000	2,101,000	12.02	15,710,000	1,584,500	9.91
Other Countries	60,704	4,300	14.12	-	-	-	234,000	20,000	11.70	404,000	32,400	12.47
World Total	11,039,562	978,600	11.28	10,931,295	1,337,400	8.17	132,138,000	11,084,400	11.92	97,131,000	10,774,800	9.01
0204422010 Lamb Shoulders, bone-in, frozen												
Australia	1,802,481	247,100	7.29	1,037,370	240,900	4.31	15,453,000	2,031,800	7.61	5,763,000	1,166,000	4.94
New Zealand	594,708	89,600	6.64	1,582,634	310,900	5.09	24,977,000	3,206,500	7.79	19,318,000	3,501,200	5.52
Other Countries	28,665	4,700	6.10	-	100	-	703,000	94,500	7.44	484,000	53,900	8.98
World Total	2,425,854	341,400	7.11	2,620,004	551,900	4.75	41,133,000	5,332,800	7.71	25,565,000	4,721,100	5.42
	\$US	Kg	\$/kg.	\$US	Kg	\$/kg.	\$US	Kg	\$/kg.	\$US	Kg	\$/kg.
0204222030 Lamb loins, bone-in, fresh or chilled												
Australia	4,373,032	398,400	10.98	5,102,095	640,800	7.96	51,512,000	4,007,600	12.85	66,625,000	7,515,700	8.86
New Zealand	531,946	56,100	9.48	933,664	96,400	9.69	5,488,000	443,400	12.38	9,040,000	966,200	9.36
Other Countries	-	(100)	-	-	-	-	(1,000)	0	-	-	-	-
World Total	4,904,978	454,400	10.79	6,035,759	737,200	8.19	56,999,000	4,451,000	12.81	75,665,000	8,481,900	8.92
0204422020 Lamb legs, bone-in, frozen												
Australia	938,159	134,300	6.99	331,190	69,900	4.74	19,033,000	2,428,100	7.84	7,287,000	1,278,200	5.70
New Zealand	332,211	39,900	8.33	361,486	63,200	5.72	13,884,000	1,590,600	8.73	5,763,000	898,900	6.41
Other Countries	-	-	-	127,598	15,200	8.39	503,000	57,900	8.69	746,000	85,700	8.70
World Total	1,270,370	174,200	7.29	820,274	148,300	5.53	33,420,000	4,076,600	8.20	13,796,000	2,262,800	6.10
0204300000 Lamb Carcass (full or half), frozen												
Australia	218,298	36,100	6.05	1,299,821	235,200	5.53	5,831,000	842,800	6.92	6,725,000	1,166,200	5.77
New Zealand	655,692	81,300	8.07	1,330,701	204,600	6.50	10,286,000	1,286,300	8.00	9,805,000	1,463,500	6.70
Other Countries	768,073	103,800	7.40	216,760	35,100	6.18	8,100,000	1,114,000	7.27	4,155,000	624,000	6.66
World Total	1,642,063	221,200	7.42	2,847,282	474,900	6.00	24,217,000	3,243,100	7.47	20,685,000	3,253,700	6.36
0204222010 Lamb Shoulders, bone-in, fresh or chilled												
Australia	1,449,365	177,600	8.16	1,790,365	333,900	5.36	13,946,000	1,760,800	7.92	17,128,000	2,732,600	6.27
New Zealand	186,532	24,600	7.58	442,413	65,000	6.81	3,120,000	391,100	7.98	2,936,000	443,400	6.62
Other Countries	-	100	-	-	-	-	-	-	-	1,000	-	-
World Total	1,635,897	202,300	8.09	2,232,778	398,900	5.60	17,066,000	2,151,900	7.93	20,065,000	3,176,000	6.32

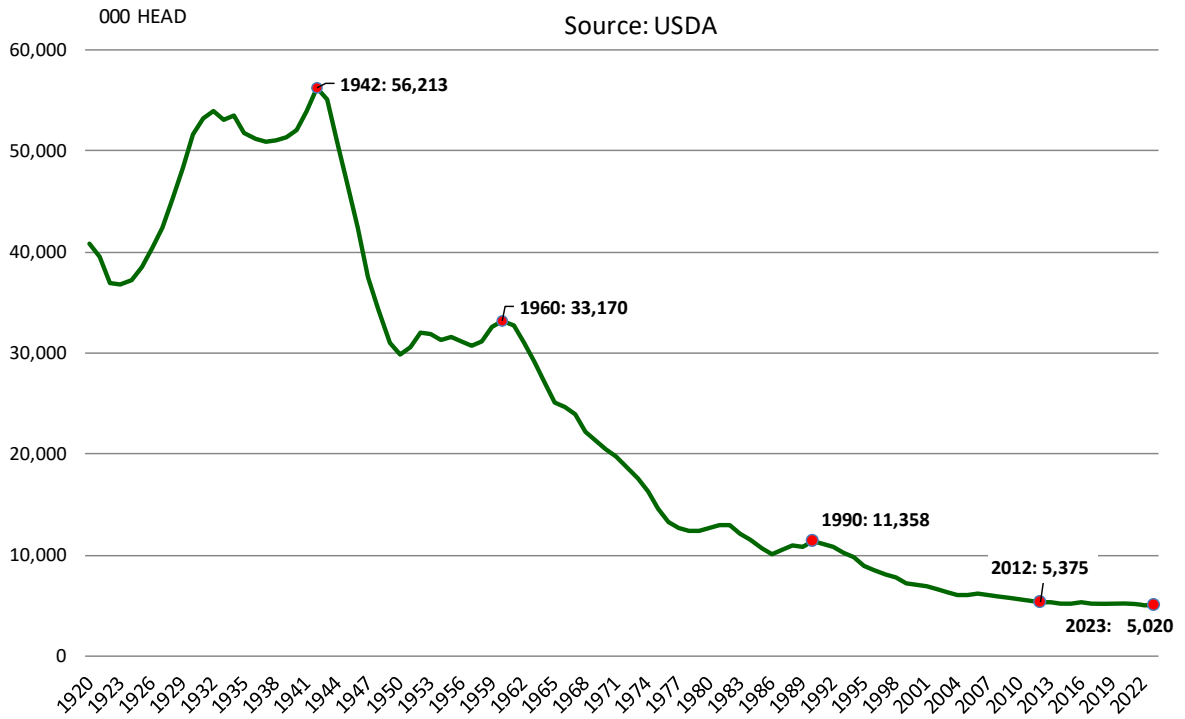
Lamb Trade Data Detail

Data source: USDA-FAS. Analysis by Steiner Consulting

	Oct-22			Oct-23			Jan - October 2022			Jan - October 2023		
	\$US	Kg	\$/kg.	\$US	Kg	\$/kg.	\$US	Kg	\$/kg.	\$US	Kg	\$/kg.
0204222020 Lamb legs, bone-in, fresh or chilled												
Australia	328,758	37,000	8.89	984,881	147,700	6.67	4,774,000	471,800	10.12	6,784,000	908,100	7.47
New Zealand	317,459	30,400	10.44	193,570	18,200	10.64	2,133,000	202,400	10.54	2,515,000	272,400	9.23
Other Countries	-	-		-	-		1,000	-		-	100	-
World Total	646,217	67,400	9.59	1,178,451	165,900	7.10	6,908,000	674,200	10.25	9,299,000	1,180,600	7.88
0204422030 Lamb loins, bone-in, frozen												
Australia	473,295	51,500	9.19	482,562	82,900	5.82	3,837,000	393,400	9.75	3,185,000	413,200	7.71
New Zealand	58,346	5,600	10.42	534,484	19,700	27.13	2,772,000	166,800	16.62	4,142,000	229,400	18.06
Other Countries	-	-		-	-		-	-		-	-	
World Total	531,641	57,100	9.31	1,017,046	102,600	9.91	6,609,000	560,200	11.80	7,327,000	642,600	11.40
0204100000 Lamb carcass (full or split), fresh or chilled												
Australia	-	-		-	-		-	-		-	-	
New Zealand	-	-		-	-		186,000	24,400	7.62	-	-	
Other Countries	31,839	6,400	4.97	-	-		2,274,000	414,500	5.49	480,000	90,400	5.31
World Total	31,839	6,400	4.97	-	-		2,460,000	438,900	5.60	480,000	90,400	5.31

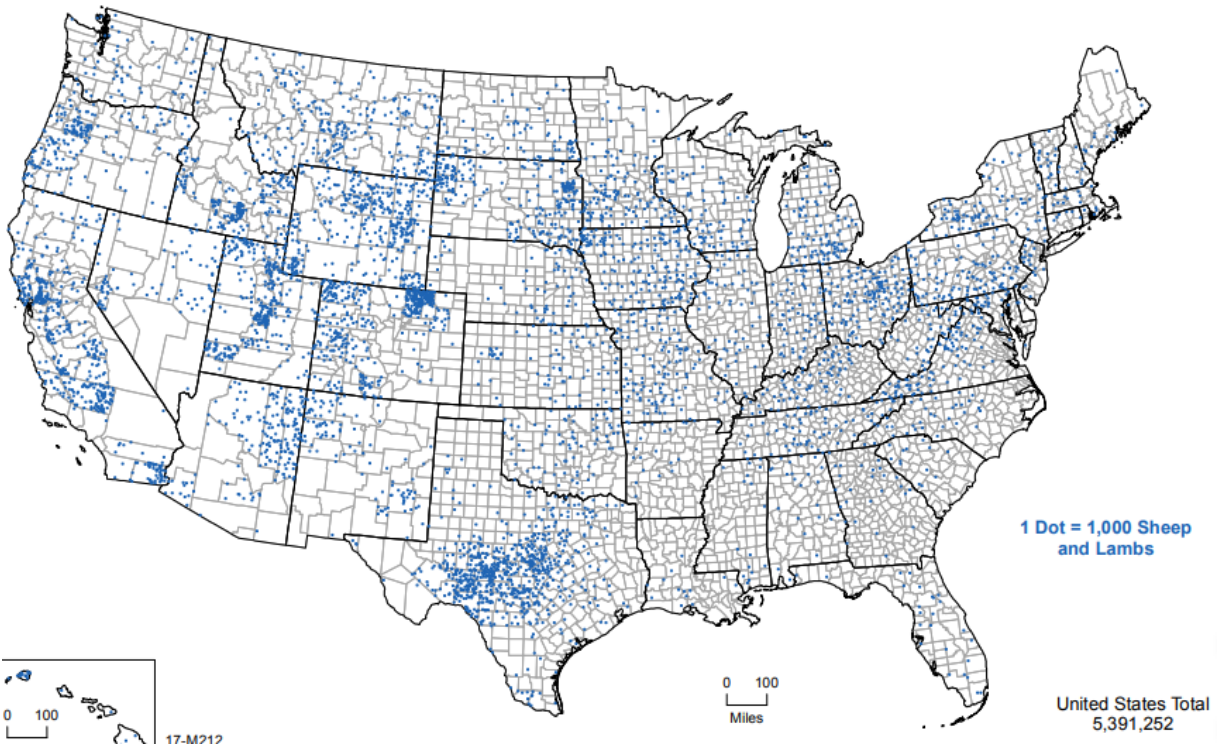
JANUARY 1 US SHEEP & LAMB INVENTORY

Source: USDA

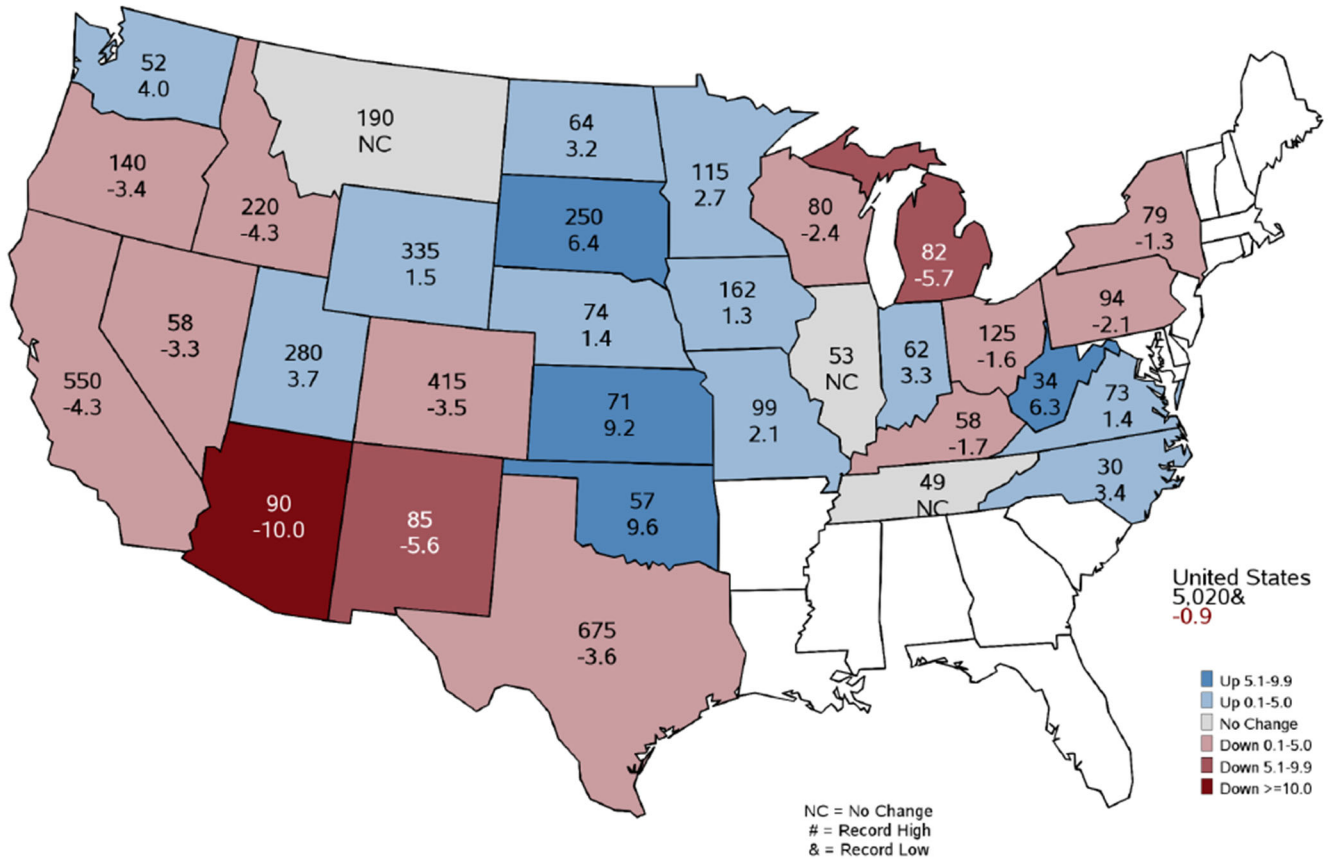


Distribution of Lambs and Sheep in the US by County

Source: USDA-NASS, 2017 Census of Agriculture



January 1, 2023 Sheep and Lambs Inventory (1,000) Head and Percent Change from Previous Year



The map was created and distributed by the US Department of Agriculture, National Agricultural Statistics Service

